

SECTION 8, T.6N., R.2E., S.L.B. & M.  
IN WEBER COUNTY  
SCALE 1" = 400'

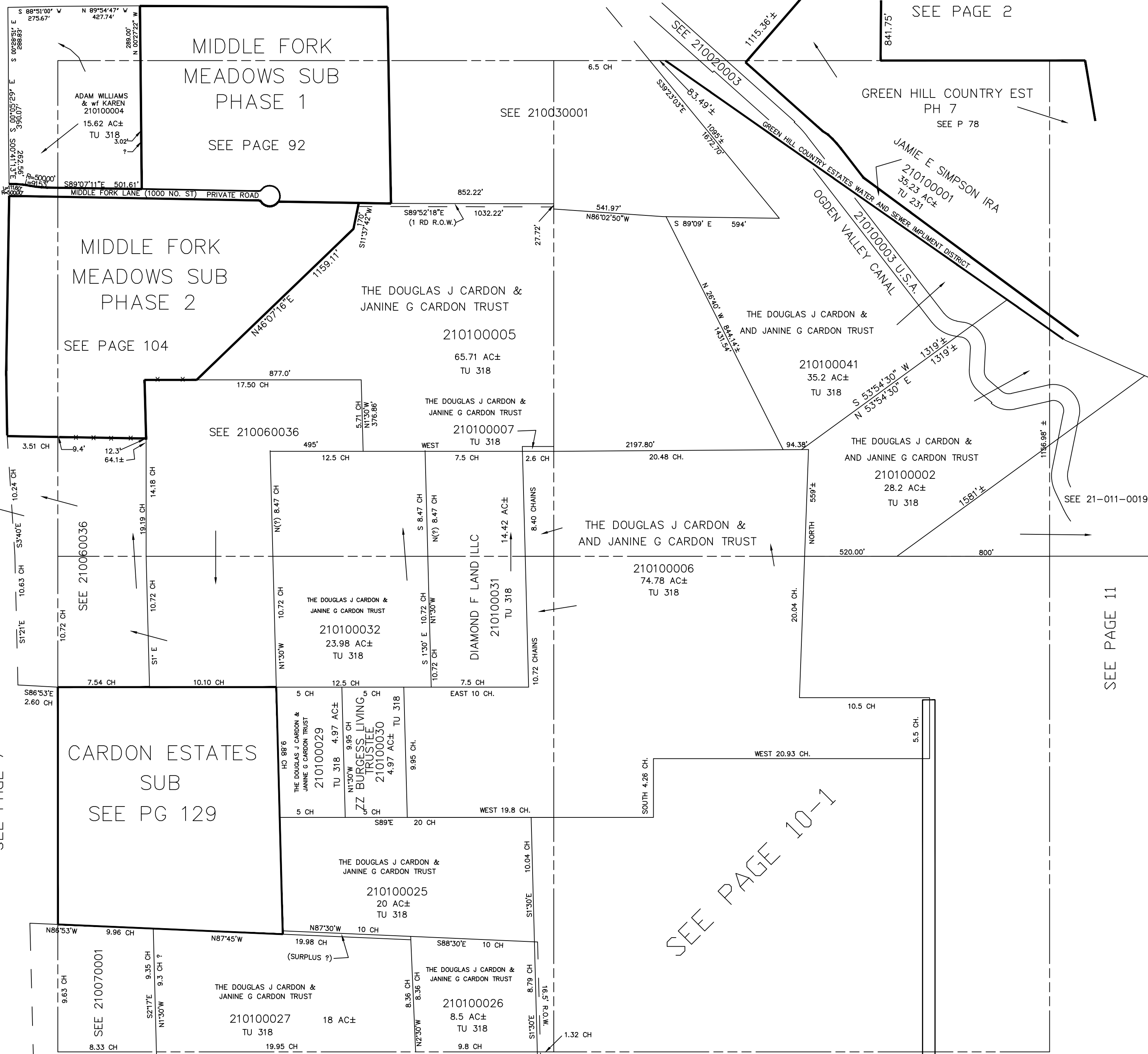
TAXING UNIT: 231, 318

SEE PAGE 3

SEE PAGE 6

SEE PAGE 7

SEE PAGE 11



SEE PAGE 2

GREEN HILL COUNTRY EST  
PH 7  
SEE P 78

JAMIE E SIMPSON IRA  
210100001  
35.23 AC±  
TU 231

THE DOUGLAS J CARDON &  
JANINE G CARDON TRUST  
210100005  
65.71 AC±  
TU 318

THE DOUGLAS J CARDON &  
AND JANINE G CARDON TRUST  
210100041  
35.2 AC±  
TU 318

THE DOUGLAS J CARDON &  
AND JANINE G CARDON TRUST  
210100002  
28.2 AC±  
TU 318

THE DOUGLAS J CARDON &  
AND JANINE G CARDON TRUST  
210100006  
74.78 AC±  
TU 318

THE DOUGLAS J CARDON &  
JANINE G CARDON TRUST  
210100032  
23.98 AC±  
TU 318

DIAMOND F LAND ILLC  
210100031  
TU 318

CARDON ESTATES  
SUB  
SEE PG 129

THE DOUGLAS J CARDON &  
JANINE G CARDON TRUST  
210100029  
TU 318  
ZZ BURGESS LIVING  
TRUSTEE  
210100030  
TU 318

THE DOUGLAS J CARDON &  
JANINE G CARDON TRUST  
210100025  
20 AC±  
TU 318

THE DOUGLAS J CARDON &  
JANINE G CARDON TRUST  
210100027  
18 AC±  
TU 318

THE DOUGLAS J CARDON &  
JANINE G CARDON TRUST  
210100026  
8.5 AC±  
TU 318

SEE PAGE 10-1

SEE PAGE 26-2

SEE PAGE 26